

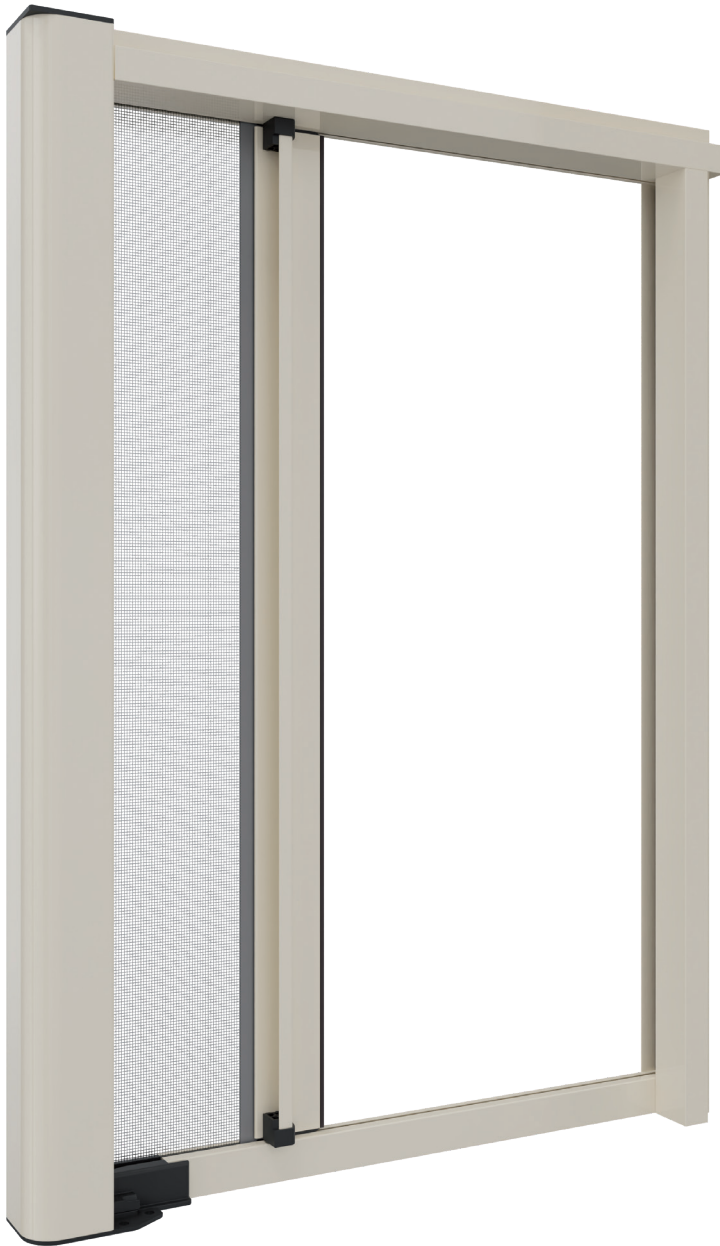


O F F I C I N E
RAMMI

BROCHURE | Recessed mosquito nets

Anna 50

Single Side Button Single Track



Suitable for: French doors

Winding type: Manual spring

Closing system: Magnet

Cassette: Predisposition for left-side installation

Track: Fixed for Recessed with buttons

Handle: Internal / external with ergonomic grip

Net: Fiberglass

Fastening System: Concealed brackets for tracks, screws/plugs

ON REQUEST

Winding Control: Slow back-on-top system

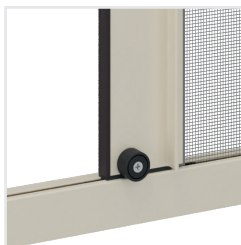
NOTE: For proper operation in dimensions with 1401- and 2800-mm width, the double side version is recommended.

Recommended measurements (mm)

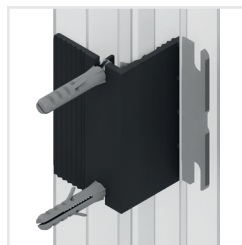
	length	height
max	1400	2600



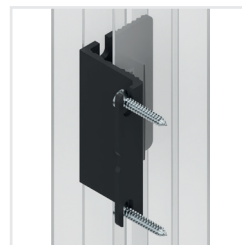
Removable Bottom Track



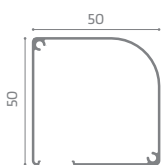
Sliding Wheel



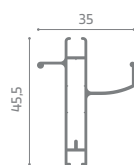
Concealed fastening brackets



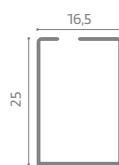
Concealed fastening brackets



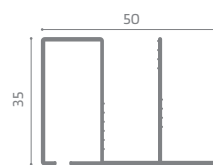
Cassette



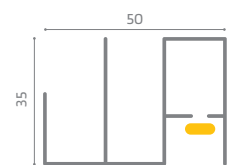
Handlebar



Bottom track



Top Track



Closing profile

O F F I C I N E
RAMI

Via Provinciale, 10
46020 Monteggiana (MN) - ITALY
Tel.: +39 0376 527481
Fax: +39 0376 527060
info@officine.ami.com
officine.ami.com